

## (RE)COLLECT: THE MAKING OF OUR ART COLLECTION



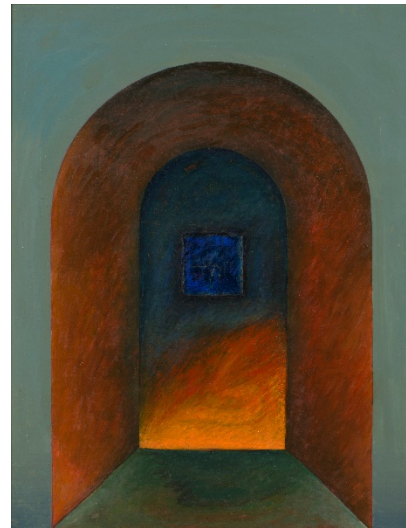
**Chuah Thean Teng.** *Self-Portrait.*  
c. 1950s. Batik. 31 x 21 cm.  
Gift of the Loke Wan Tho Collection.  
Collection of National Gallery Singapore.  
\*The first registered work in the collection.



**Georgette Chen.** *Family Portrait.* c.1954.  
Oil on canvas. 161.5 x 130.2 cm. Gift of the artist's estate. Collection of National Gallery Singapore.  
\*An example of an important work by one of Singapore's female pioneer artist.



**Cheo Chai Hiang.** *And Miles to go before I Sleep.*  
1975. Wood, metal and ink. 90 x 54 x 40 cm.  
Gift of the artist. Collection of National Gallery Singapore.  
\*Artwork displayed at National Museum Art Gallery's inaugural exhibition in 1976, subsequently donated by the artist.



**Latiff Mohidin.** *Mindscape 17.* 1983. Oil on canvas. 82 x 64 cm. Gift of BinjaiTree in memory of Chia Yew Kay and Tan Kim Siew. Collection of National Gallery Singapore.  
\*Recent Acquisition: Leading Malaysian artist known for his pursuit of regional aesthetics in abstraction.



Uncover the untold history behind the collection of National Gallery Singapore, which is also the world's largest national collection of modern art from Singapore and Southeast Asia.

Showcasing over 130 works, *(Re)collect* is the first exhibition to focus on the origins of the Gallery's collections and how it continues to evolve today. It aims to reveal the stories behind the creation of the collection which has borne witness to the humble beginnings and the seminal moments of the art scene in Singapore and Southeast Asia. Look out for masterpieces by pioneering Singapore artists such as Georgette Chen, Liu Kang and Cheong Soo Pieng, as well as exciting recent acquisitions of works by Kim Lim, Latiff Mohidin, and S. Sudjojono which have not been exhibited at the Gallery previously.

#### Highlights:

- Discover the origins of our visual arts collection, recent acquisitions, untold stories and little known-facts behind the Gallery's collection.
- Rare opportunity to see some of the first works in our collection, that were donated by Dato Loke Wan Tho, a visionary art philanthropist and founder of Cathay Organisation.
- Uncover interesting stories about our history through rarely seen records of early acquisitions, and materials from artists' personal archives including diaries and letters by Georgette Chen.
- Rare opportunity to discover the journey of our acquisitions – from the selection process, to the point they enter our collection.

---

**Date** 11 May 2018 – 19 August 2018

<b>Time</b>	Saturday - Thursday	10am – 7pm
	Friday	10am – 9pm

**Venue** Singtel Special Exhibition Gallery B & C,  
City Hall Wing, Level 3,  
National Gallery Singapore,  
1 St. Andrew's Road, Singapore 178957

\*General admission applies.

---

**Enquiries** [info@nationalgallery.com.sg](mailto:info@nationalgallery.com.sg)  
6271 7000

**Media enquiries** [keith.kay@tateanzur.com](mailto:keith.kay@tateanzur.com)  
[Kelly.quek@nationalgallery.sg](mailto:Kelly.quek@nationalgallery.sg)

---

**National Gallery Singapore** is a visual arts institution which oversees the largest public collection of modern art in Singapore and Southeast Asia. Situated in the heart of the Civic District, the Gallery is housed in two national monuments—City Hall and former Supreme Court—that have been beautifully restored and transformed into this exciting venue.

Reflecting Singapore's unique heritage and geographical location, the Gallery features Singapore and Southeast Asian art from Singapore's National Collection in its long-term and special exhibitions. The Gallery also works with international museums to jointly present Southeast Asian art in the global context, positioning Singapore as a regional and international hub for the visual arts.

In 2016, the Gallery won the awards for "Best Attraction Experience", "Breakthrough Contribution to Tourism" and "Best Customer Service (Attractions)" at the prestigious Singapore Tourism Awards for its role in adding to the vibrancy of Singapore's tourism landscape.

[www.nationalgallery.sg](http://www.nationalgallery.sg)

Follow us:

